

## Ordinary Council Meeting

15<sup>th</sup> November 2016



Papers Relating

# CONTENTS

<u>Item Number</u>	<u>Report</u>
10.3.3	Officers Reports
12.1	Special Facility Licence Application – Fraser Range Caravan Park
12.2	Report by main Roads on Camel Roundabout



10.3.3

Officers Reports

## REPORT BY CEO

8<sup>TH</sup> NOVEMBER 2016

1. I attended a one-day course in "Planning Practice in Local Government" put on by WALGA. I found the course interesting and now have some insight into what town planning is all about. I don't profess to now being a Planner, but at least now I have an understanding of the jargon, language and definitions used in planning and what is entailed.
2. Councillors will recall that an objection was lodged against ML63/0662 (Mining of Polar Bear). During the month we made contact with the legal profession and had an interesting discussion with Barrister Elspeth Hensler who gave us direction and what to expect at a hearing. Councillors Webb and Best were in attendance. Subsequent to this meeting we requested the Mining Registrar's office to undertake a search for supporting documentation lodged by S2 Resources.  
The following day we received a call from S2 Resources requesting a meeting to resolve the issue outside of court. This meeting is scheduled for Thursday 24<sup>th</sup> November. The original court date has been extended by a month.
3. The CEO attended a GVROC meeting held in Warburton (90 minute flight north-east of Kalgoorlie). It was a fascinating experience to hear and see first-hand the difficulties experienced in an extremely remote region.
4. Two houses have currently been identified as being suitable for demolition. Contact was made with the owners (both out of town) and the required process is being followed. It is anticipated that this will happen later in November; both owners will be billed for the costs involved.
5. Shire management have been working closely with WALGA in an attempt to reduce the piles of motor car wrecks in and around Norseman. This is a nationwide problem as the price of scrap metal has collapsed with the result that metal dealers are currently "out of the market". WALGA has however reached an agreement with Sims Metal to undertake a trip to the Gold Fields if the quantities justify it. We are in the process of collecting data in Norseman and along the Eyre Highway.
6. The Shire has on three separate occasions this month lodged a complaint with Auspost on behalf of the community regarding the closure of the postal facility and non-delivery by the Postman.
7. **Report by Tracy Dixon:**

On Tuesday 8<sup>th</sup> November we received a visit from Goldfields Money Kalgoorlie. These two ladies brought with them a computer which will be available for the public to open personal accounts, a very quick and easy process, which I will help them with if needed and only requires a current driver's licence as ID. The ladies came bearing advertising posters and office/bank supplies that we will need; also \$4,000 in coins which will be exchanged for vouchers that can be printed through the ATM.

In addition to being able to open personal accounts, individuals and clubs etc are able to speak directly to staff in Kalgoorlie regarding term deposits, home loans and other banking queries.

The ladies and I went for a wander to the main street to visit owners/managers of local business where we could, to chat to them about what GMY can offer through the Shire. We had interest from a couple of people for personal accounts and club/association accounts. One important point of concern from the community that the ladies will take back with them is the issue of the ATM not being accessible out of business hours and on weekends and the need for a cheque deposit facility.

GMY's visit brings us a small step closer to a successful banking option for the community. GMY employees will be back every Tuesday (to begin with) to meet interested individuals and to provide the one-on-one service I believe the community needs in order for this to be successful as possible. They will also be attending the November Community Markets with a "pop-up branch" to further inform the community and promote themselves and their relationship with the Shire of Dundas.

## REPORT TO COUNCIL

### ORDINARY MEETING TUESDAY 15<sup>th</sup> November 2016

**AREA:** Works Department

**OFFICER:** Jon Fry

**Period of Reporting:** 14<sup>th</sup> October 2016-11<sup>th</sup> November 2016

#### **Gardeners**

Notices to ratepayers with a fire hazard on their property have gone out and if they are not cleaned up by the 4<sup>th</sup> of December the Shire can organise the necessary work and recoup the costs. Depending on our commitments this can be done by our own staff or contractors. The gardeners have been removing some of the plants around the Administration building that were starting to look very tired and are being replaced with more suitable ground cover type plants. Otherwise just general duties.

#### **Town Crew**

Quite a bit of cover material had to be carted into the hard waste dumping area due to the ever increasing amount of waste coming from mining companies. More slots had to be dug also to cater for putrescible rubbish.

#### **Construction Crew**

The Construction Crew had a successful trip to Eucla with the grading of the airstrip completed, the road out to the waste depot and golf course graded. The waste depot was pushed in and the fence shifted to allow for more room for waste. Minor jobs included some painting at the airstrip, some tree trimming and removal and a hard waste pick up.

On return from Eucla the crew built an access road to the new "Free Range Camping Ground" allowing access in wet weather. They then started construction of the new Airstrip building a haul road around the perimeter of the airstrip to allow access for road trains to dump fill material from Higginsville. Presently we are using fill material from a nearby quarry which is a mixture of gypsum/sand/talc, this is going down hard enough to take the road trains although in places we have had to go 800mm thick to prevent moisture rising from the lake. The original plan stipulated the haul road to be 200mm thick so we are using a considerable amount more than anticipated.

Below is a photo (courtesy L Webb) of the works in progress on the bottom right is the quarry where the material is being sourced from. Then a semi-circle of an access road allowing road trains to negotiate the curve (50 m radius)



## REPORT TO COUNCIL

COUNCIL GENERAL MEETING TUESDAY 20<sup>th</sup> November 2016

AREA: COMMUNITY DEVELOPMENT

OFFICER: PANIA TURNER

Period of Reporting: October – November 2016

### Community Consultation and Feedback

Council will draw the written survey prizes this meeting for four \$150 local business gift vouchers.

Whilst both written and online surveys will continue to be received for the remainder of the year Community Development is now starting to collate the information received. Thanks to Councillor Vicensoni who has been very active in promoting the survey and who will be at the local markets with a survey stand.

The Shire through the local post service delivered 420 Community Voice surveys to local residents and ratepayers. Surveys were also available for collection from the Shire and Norseman Hardware. The survey was featured as a removable insert in the September Norseman Today which is available across the Shire and delivered to a subscription list.

Small focus group and individual interviews were also conducting capturing the views of specific age and interest groups such as the Norseman pensioners, Ngadju artists and cultural performers, Ngadju Conservation, Community Health, Families with young children and individuals who preferred a one on one setting. Whilst there has been some feedback through the individual responses from local business owners more would be beneficial. Council may like to consider the viability of a large community forum which would benefit from independent facilitator trained in such settings. Larger forums, unless run well, can be dominated by personalities who come with set agendas and dominate the voice of others. If Council wishes to engage a facilitator they should come with strong recommendations from like communities such as ours.

Surveys received as at Thursday 10<sup>th</sup> November close of Business:

39 written            7 online

Whilst data is still being collected overwhelmingly the top priority for the community across sectors is quality Health Care and Services. Council will receive detailed breakdown of the survey results at the January 2017 Council Meeting.

### Norseman Arts: Inspire Share Exhibit

Norseman Arts: Inspire Share Exhibit has been a tremendous success with the Awards Night and competition exceeding expectations in attendance and community engagement. The competition received one hundred and nine entries with the youth making up fifty percent of those entries. The diversity and the creative skill of the entries was pleasing to see and brought a lot of enjoyment to those who visited the gallery.

The competition gallery saw an increase in visitors this year even without the Gold Fever weekend coinciding with the festival. The first week saw 30-50 visitors a day with quite an even split of tourists and locals. The local children especially enjoyed seeing their work displayed in a public gallery and colluded all family members to come and witness the event.

A number of works sold over the exhibition time purchased by both locals and visitors, highlighting the potential market for the development of creative industries within the Shire. We are now receiving interest from artists outside the Shire as to the possibility of the Shire opening up the Arts Prize to the region.

Thanks to our dedicated judges who spent much time considering the merit and creative expression of all the pieces. The next Arts festival will be held in March to coincide with the Gold Fever Festival and Norseman Cup. The combining of the two events has good flow-on for the Arts competition with the addition of a couple of new categories such as fashions on field and a much requested old fashioned country bake off.

Congratulations to all who entered it is the artists that truly make the event what it is and to all who supported by way of voting, visiting, encouraging and purchasing. A special mentioned to the Norseman

Craft Ladies who volunteered their time to sit in the gallery. For Councils information a list of the prize winners is below.

Shire of Dundas Award of Excellence	Pania Turner	Award	Artist Name
Sire of Dundas Award of Commendation	E A McEwan	Norseman DHS Class Art Display	Year 4 Class
People's Choice		Artist of the Eyre	Katrina Martens
Knitted & Stitched 1 <sup>st</sup> Place	Pauline Bennet	Sculpture Awards 1 <sup>st</sup>	Kim Wills
Knitted & Stitched 2 <sup>nd</sup> Place	Flora Tanzer	Sculpture Awards 2nd	Jacquie Best
Knitted & Stitched 3 <sup>rd</sup> Place	Doll Dellamotte	Sculpture Awards 2nd	Clem Pinoli
Scrapbooking and Paper Craft 1 <sup>st</sup> Place	Angela Smart	Indigenous Art Awards	Valma Schultz
Scrapbooking and Paper Craft 2 <sup>nd</sup> Place	Eileen Richardson	Indigenous Art Awards	Valma Schultz
Scrapbooking and Paper Craft 3rd Place	Sharon Warner	Garden Art Awards	Kim Wills
Ceramics 1st	Misty-Lee Smart		Kathleen Negus
Ceramics 2nd	Jacquie Best		Kaydie Negus
Ceramics 3rd	Jai Honman	Photographic Awards 1st	Jake Warner
Cake Decorating	Raewyn Bond	Photographic Awards 2 <sup>nd</sup> 1 <sup>st</sup> place Cake decorating	Raewyn Bond
Junior Art Award 1st	Lynkon Buszan	Photographic Awards 3rd	Kylie Tibbles
Junior Art Award 2nd	Desandie Kohobange		
Junior Art Award 3rd	Sierra Syme		
Youth Awards 1 <sup>st</sup>	Hannah Mulroy		
Youth Awards 2 <sup>nd</sup>	Violet Moir		
Youth Awards 3rd	Georgina Schultz		
Youth Awards 3rd	Kaydie Negus		
Senior Youth Awards 1st	Misty-Lee Smart		
Senior Youth Awards 2nd	Corryn Smart		
Senior Youth Awards 3rd	Ajal Shaju		

## **Tourism and Marketing the Shire of Dundas**

Community Development continues to identify areas where the Shire of Dundas can build sound networking and partnership opportunity with not only the promotion of being the heart of the Great Western woodlands, but also the promotion of being a visitor friendly Shire by building our tourism services and identifying gaps in our delivery.

As the Shire looks at the Visitor Sites and Experience and Development Plan, community development is very aware of the vital need to support not only visitor experience but lived community experience as priorities. Well serviced, happy, vibrant local communities attract not only visitors but business investment and development.

The Shire of Dundas is being talked about not only in Arts and Culture circles but also being looked at as we embark on achieving the goals in the development plan. This interest provides opportunity for Dundas to be involved in creative industries promotion and development, regional projects and local community projects. The process may take time however well invested and thought through development will be beneficial for sustainable community progress.

## **Seniors Have A Go Day**

Community Development, HACCS and a group of Norseman seniors travelled to Kambalda for the Seniors Have A Go Day. Continuing in the neighbourly relationship with the Shire of Dundas, the Shire of Coolgardie invited Norseman seniors to participate in the day.

The outing was a great success with our seniors having workshops in drumming, social media, dance, food sense, first aid response as well as being very well fed.

## **Remembrance Day 11<sup>th</sup> November**

The Shire foyer was full with the community and the local school children attending the Remembrance Day Service on Friday. Students from the 5/6 class of Norseman District High School sang And the Band Played Waltzing Matilda which was very well received by all in attendance. Two of their students also spoke Connor Wing and Georgina Schultz. The students in attendance were from Pre-Primary to Year 12 and all represented their school with respect and pride.

This year this service had some issues with timing with the service ending earlier than programmed. Understandably this was upsetting to some who missed the service and Community Development will endeavour to rectify the problem for next year.

## **Ray Ryder Community Entertainment and Picnic**

Ray Ryder will be performing a free community event at marks Park on Saturday 19<sup>th</sup> November 2016. This will be our Events Officer's first major solo event and I encourage all of Council to bring along family and friends to support the afternoon and promote through their networks.

These community events are much sought after by the community and as we head into Christmas people look for opportunities to gather together in family friendly activities. For more information on the event please have a chat to our wonderful Events Officer Margaret.



## Youth Officer's Report – Council Meeting November 2016

**Swim Club:** we took 3 of our 6 registered kids to Kambalda for their first time trial of the season. Was a great afternoon getting reacquainted with our Kambalda team mates. There was an information and registration day held at the Norseman pool to see if we could increase our numbers for our swimming club. More information on how that went in the next report.

**MILO in2CRICKET:** We have begun our latest summer cricket program and it was great to see some new faces and returning players come along and join in on the cricket action. Parents can still register their kids to join in with this 6 week program. Have received an email from the WACA regarding the possibility of our cricket kids playing a game with other MILO in2CRICKET centres at one of 3 Sheffield Shield games next year. I will be contacting the WACA for some more information and will see if there is any chance that we might be able to take a group of kids and parents away for this.

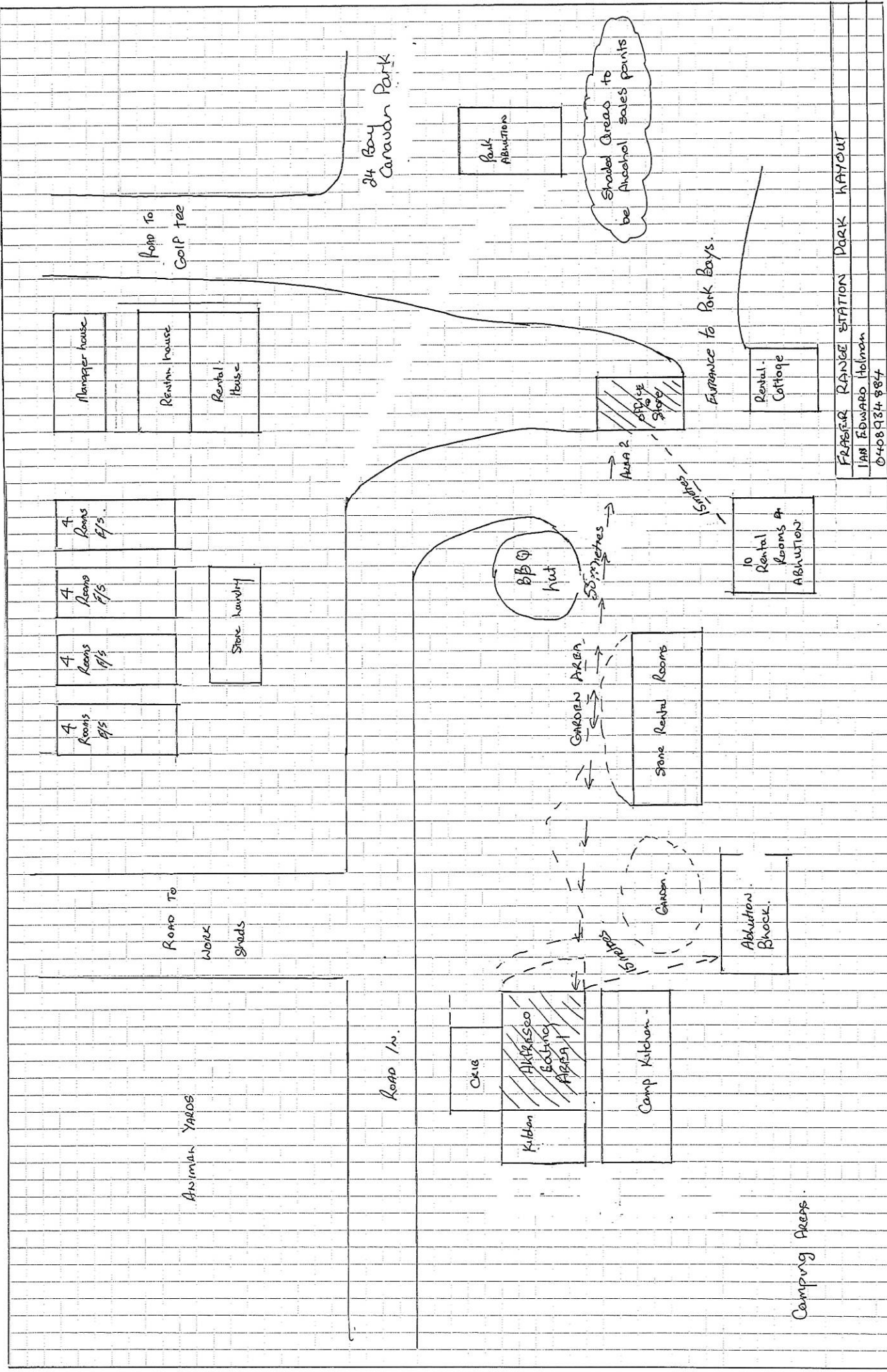
**Year 5/6 Camp:** The Youth Officer was invited by the school to attend and help out on the Year 5/6 camp to Dwellingup. We went and stayed at beautiful Nanga Bush Camp for the week and spent 3 action packed days doing lots of fun & challenging group activities. The kids took part in wall climbing, flat water rafting, problem solving, team work and much more. I look forward to being able to help the school out on future camps and excursions.



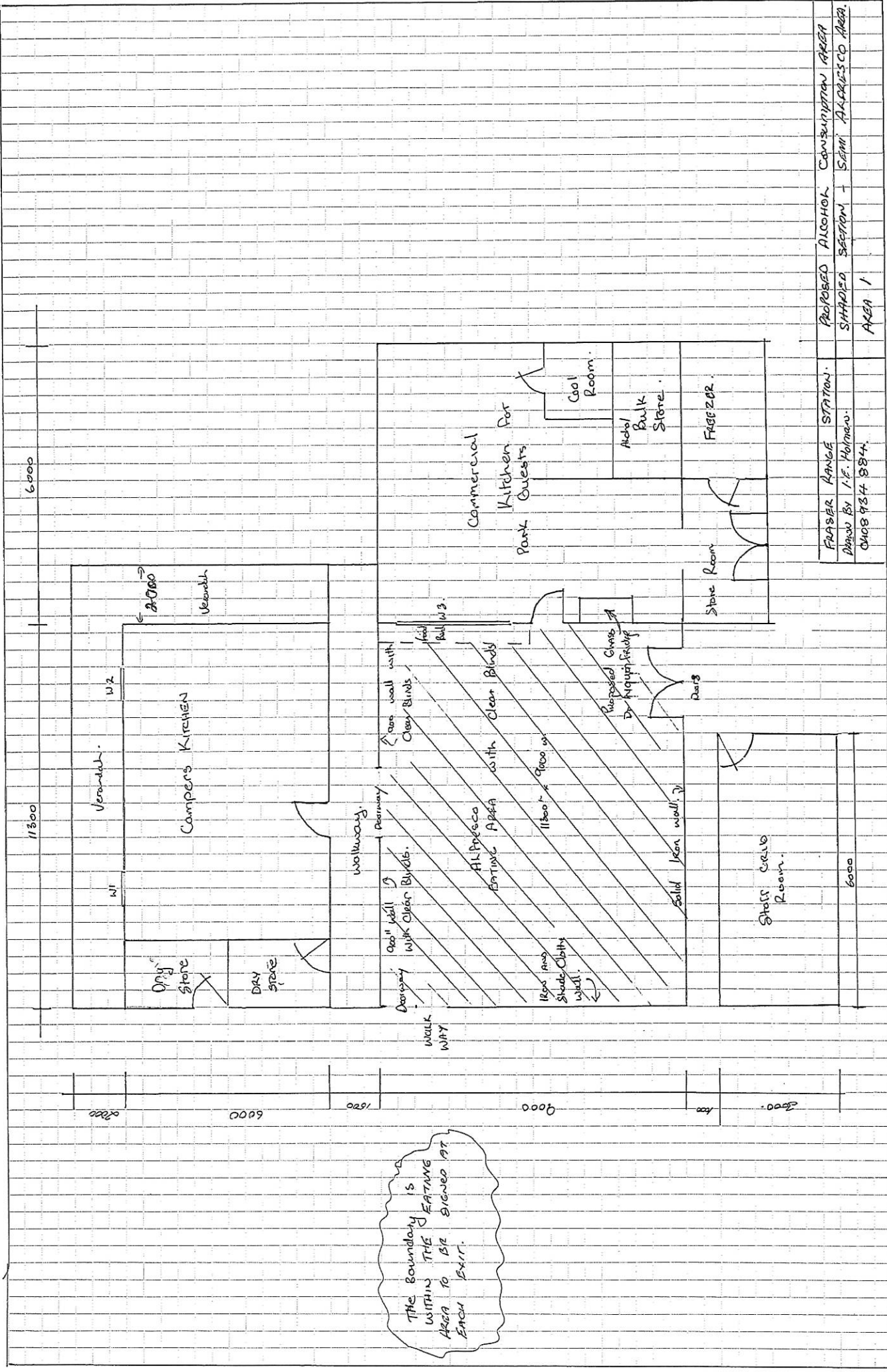


12.1

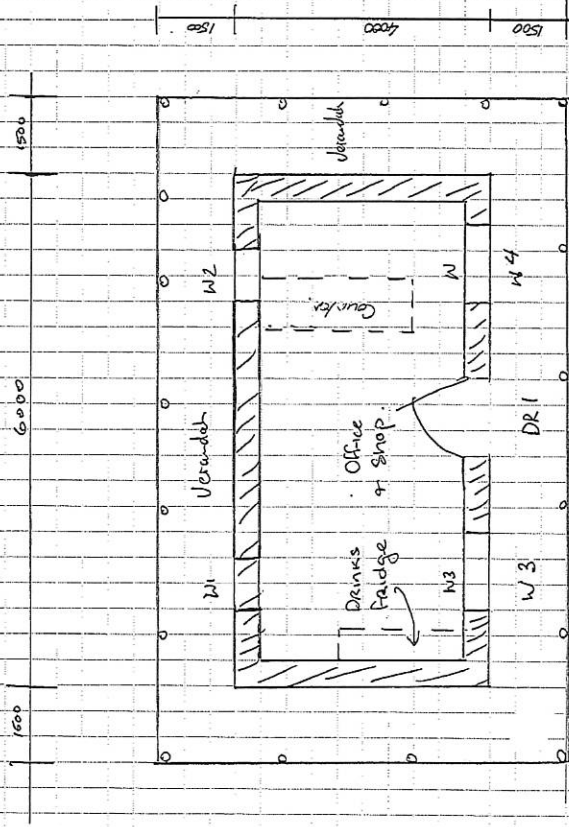
Special Facility Licence Application - Fraser Range Station



FRASER RANGE STATION PARK LAYOUT  
 IAN EDWARD HOLMICH  
 04085334884



FRASER RANGE STATION. PROPOSED ALCOHOL CONSUMPTION AREA  
 Drawn By I.F. Holman.  
 SHTHED SECTION - SPMI ALABRISCO AREA.  
 QACB 934 884.  
 AREA 1



Point of sale for Auction at Station Store - Office

FASTER RANGE STATION	OFFICE - SHOP	AREA 2
IAN EDWARD HILTON	POINT FOR SALE OF LIQUOR	
0408934884		



12.2

Report by Main Roads on Camel Roundabout

---



COOLGARDIE ESPERANCE HWY H010  
 RAHSKY STREET INTERSECTION  
 PROPOSED MODIFICATIONS  
 PLAN LAYOUT  
 16.5.6 SLK  
 LOCAL AUTHORITY: SHIRE OF DUNDAS SK-35-PLN-01

**mainroads**  
 WESTERN AUSTRALIA  
 CENTRAL AND NORTHERN REGIONS DIRECTORATE  
 KALGOOLIE ESPERANCE REGION  
 RIFESE STREET  
 KALGOOLIE WA 3413  
 Telephone: (08) 9489432  
 Fax: (08) 9489343

DESIGNED: D. NICHOLLS  
 DRAWN: D. NICHOLLS  
 DATE: 7/11/16  
 SCALE: 1:1000

**mainroads**  
 WESTERN AUSTRALIA  
 PLANNING AND TECHNICAL SERVICES DIRECTORATE  
 ROAD AND TRAFFIC ENGINEERING BRANCH  
 WATKINS STREET  
 PERTH WA 6000  
 Telephone: (08) 9221 1711  
 Fax: (08) 9221 428

**METADATA**  
 GROUND SURVEY STANDARD:  
 DATE OF CAPTURE:  
 MAPPING SURVEY STANDARD:  
 DATE OF CAPTURE:  
 MAIN ROADS PROJECT ZONE: MGA Zone 51  
 HEIGHT DATUM: A.H.D.

**CONCEPT DESIGN  
 DRAWING**

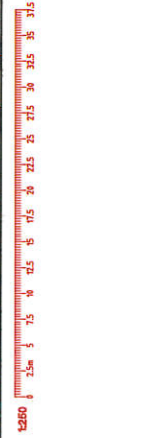
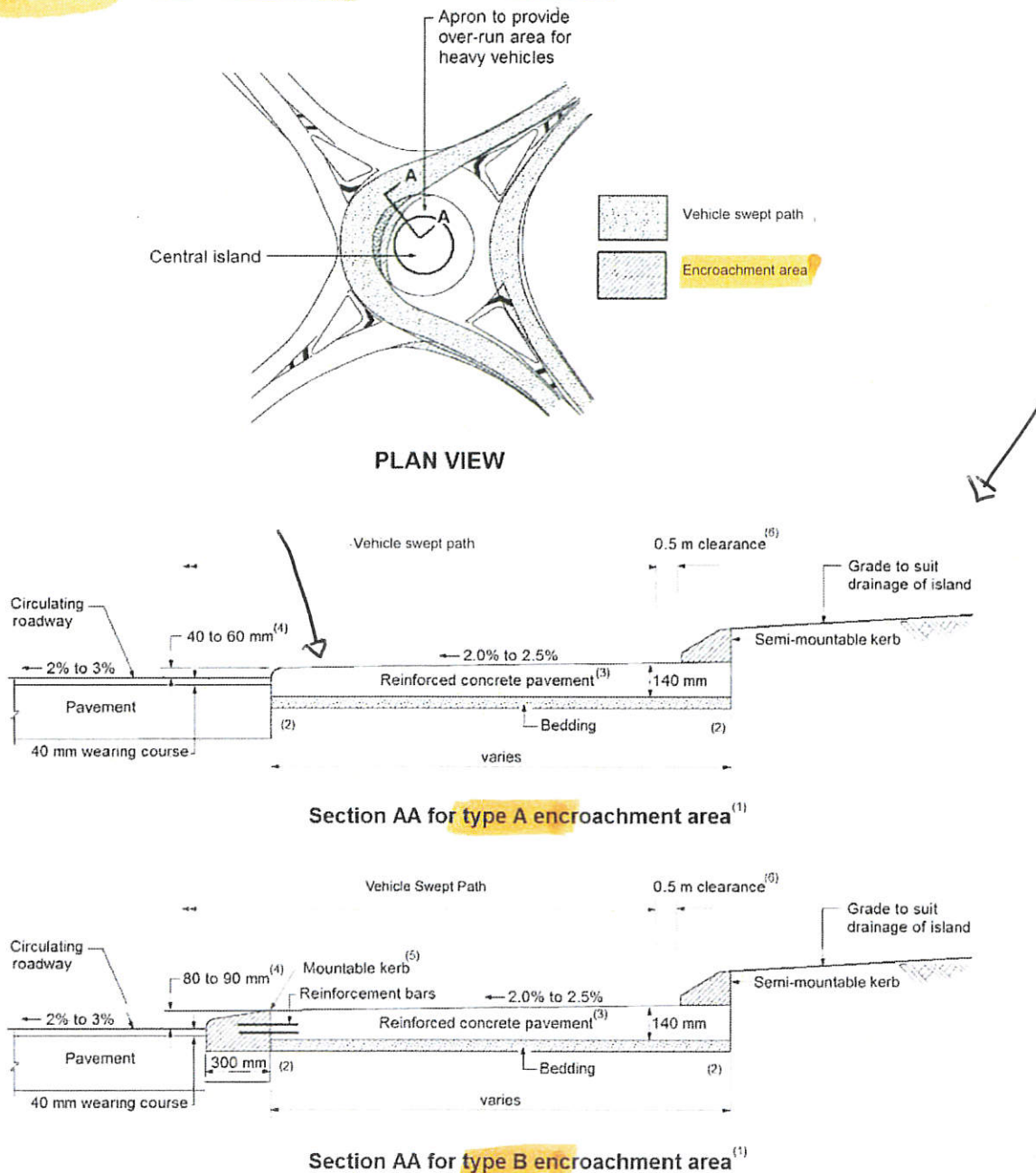


Figure 4.11: Typical encroachment area detail at a roundabout



- 1 Alternative profiles that discourage drivers of passenger cars from mounting raised area that is designed to enable relatively smooth passage by heavy vehicles.
- 2 Subsoil drainage may be required in these zones.
- 3 Reinforced concrete pavement. Thickness and reinforcement designed for appropriate loading. Alternative surfacing may be used on top of the pavement.
- 4 Height may vary within this range depending on jurisdictional requirements.
- 5 Mountable kerb to jurisdiction profile must be tied to reinforced concrete pavement to prevent differential movement. Dimensions shown are examples only.
- 6 Clearance is measured to the vehicle swept path, not to the wheel path.
- 7 Source: Based on Department of Main Roads (2006)<sup>7</sup>.

<sup>7</sup> Department of Main Roads (2006) has been superseded and Figure 4.11 has not been carried forward into Department of Transport and Main Roads (2014).