

SCHEDULE OF DRAWINGS:

- 5460-E01 SCHEDULE OF DRAWINGS, LEGEND OF SYMBOLS AND ROOF PLAN
- 5460-E02 FLOOR PLAN LIGHTING LAYOUT
- 5460-E03 FLOOR PLAN POWER & COMMS LAYOUT
- 5460-E04 SCHEMATICS AND SPECIFICATION

NOTATION & MOUNTING SCHEDULE

REFER TO ARCHITECTURAL ELEVATIONS AND DETAILS FOR EXACT LOCATION OF ALL OUTLETS.

- 1200- LOCATED 1200mm AFFL
- 3P- SINGLE PHASE
- 3P-N- PHASE NUMBER
- L-N- LIGHTING CIRCUIT NUMBER
- AB- 400 ABOVE BENCH
- AD- AUTOMATIC DOOR
- CL- CLEANER
- CM- CEILING MOUNTED
- CT- COOK TOP
- CS- CEILING SPAKE MOUNTED
- CU- A/C CONDENSER UNIT
- DW- DISHWASHER
- F- FRIDGE
- HL- MOUNT AT HIGH LEVEL
- HWU- HOT WATER UNIT
- IGW- GAS LIGHTING BOOSTER EXHAUST FAN
- KW- KITCHEN HOOD
- KW- KITCHEN HOOD PLATE
- MATV- MAIN AERIAL TELEVISION SYSTEM
- MCP- MECHANICAL CONTROL PANEL
- OV- OVEN
- PEX- PUSH TO EXIT
- PIR- PASSIVE INFRARED MOTION SENSOR
- PTV- PAY TV OUTLET
- RH- RANGE HOOD
- SEC- SECURITY
- SP- SWITCH PANEL
- SUS- SUSPENDED
- TEF- TOILET EXHAUST FAN
- UB- UNDER BENCH OUTLET
- UV- MICROWAVE OVEN LOCATE AS PER ARCHITECT'S JOINERY DRAWINGS
- WP- OUTLET WEATHER PROOF TYPE
- GPO- GENERAL PURPOSE POWER OUTLET
- NTD- NETWORK TERMINATING DEVICE

NOTE: OUTLETS MOUNTED 300mm AFL UNLESS OTHERWISE NOTED

LIGHTING

- B1 IP65 858ULM 17W LED 850mm HIGH TEXTURED GREY BOLLARD
-NULTE - B-SIDE LED 584x313 B-SIDE 360° LED 850 2500 NW GR
- F1 32W 1280mm x 150mm SURFACE MOUNTED LED BATTEN LUMINAIRE COMPLETE WITH VARIAL RESISTANT POLYCARBONATE DIFFUSER
- EAGLE LIGHTING - DENSIUS LED - EL-DENL-2101-100
- F2 29W 4000K LED 3400lm 1200MM X 300MM RECESSED LUMINAIRE WITH LINEAR DIFFUSER AND ACRYLIC WIPEDOWN DIFFUSER SUITABLE FOR FOOD PREPARATION AREAS
- EAGLE LIGHTING - VERTEX
- F3 20W LED 4000K SURFACE MOUNTED BATTEN FITTING COMPLETE WITH ELECTRONIC CONTROL GEAR
- PIERLITE - ECOBATTEN20
- F4 38W 4000K 1200mm x 300mm 3600lm RECESSED LED PANEL LUMINAIRE WITH OPAL PLEXIGLASS DIFFUSER
- LIGHTING PARTNERS AUSTRALIA - LPA-PANEL-1L-30
- G1 14W DEEP STARR ADJUSTABLE WHITE SUPER HERO ECO II
-NULTE-LL-9060-W-
- G2 9W LED DEEP STARR IP44 FIXED WHITE HERO II CR80
-NULTE-LL-9060-IP44-W-
- G3 12W LED TRACK MOUNTED LIGHT 2700K CR80
-NULTE-DELTA BOXY R ADM-
- W1 1X14-2W IP55 EXTERNAL UP/DOWN WALL LIGHT
NULTE - ULTRA X DOWN-UP 232 01 09 N
- W2 12W IP55 LED WALL WASHER WITH WALL BRACKET
-BUCKFORD - WEEF FLC31-LED
- W3 18W 4000K WITH/OVAL FLOOD WALL WASHER
BUCKFORD - ERCO BECKO -
- W4 6W FLOOR WASHLIGHT WITH DEEP BEAM
BUCKFORD - ERCO KUBUS -
- LI- LIGHT CIRCUIT.
- 10A LIGHT SWITCH, 2-INDICATES 2 WAY SWITCHING, M INDICATES MECHANICAL CONTROL SWITCH
- ESP MULTI-GANG LIGHT SWITCH PLATE
- 180° SURFACE MOUNTED PIR SENSOR
-STENEL HF 3600
- 360° PASSIVE INFRARED CEILING MOUNTED MOTION SENSOR
-STENEL - IS D360
USE MOTION AND SOUND DETECTORS IN ALL AMENITY AREAS
-AUTOMATION - BEG P03N-1C-FC Acoustic
- 180° SURFACE MOUNTED PIR SENSOR RATED TO IP54
-STENEL IS 2180-5
- SURFACE MOUNTED IP 56 PE CELL FOR LOCAL CONTROL OF EXTERNAL LIGHTING
- CLIPSAL 56 SERIES SUNSET 56PDD3

EMERGENCY LIGHTING

- EH1 RECESSED, SELF CONTAINED, NON MAINTAINED EMERGENCY LIGHT.
CLASSIFICATION CP = D25, C90° = D25
- PIERLITE - FRLED.
- EX1 SEMI-RECESSED, SELF CONTAINED, MAINTAINED EMERGENCY EXIT SIGN WITH DIRECTIONAL PICTOGRAPH AS REQUIRED.
CLASSIFICATION: CO-D125, C90-D125
- PIERLITE - LEDX2P2 COMPLETE WITH RECESS BRACKET KIT
- EX2 WALL/CEILING MOUNTED SELF CONTAINED, MAINTAINED EMERGENCY EXIT SIGN WITH DIRECTIONAL PICTOGRAPH AND MOUNTING BRACKETS AS REQUIRED.
MOUNTED OR SUSPENDED AT 2700 CLASSIFICATION: CO-D4, C90-D32
- PIERLITE - STINGRAY CAT No STLED

POWER AND COMMS

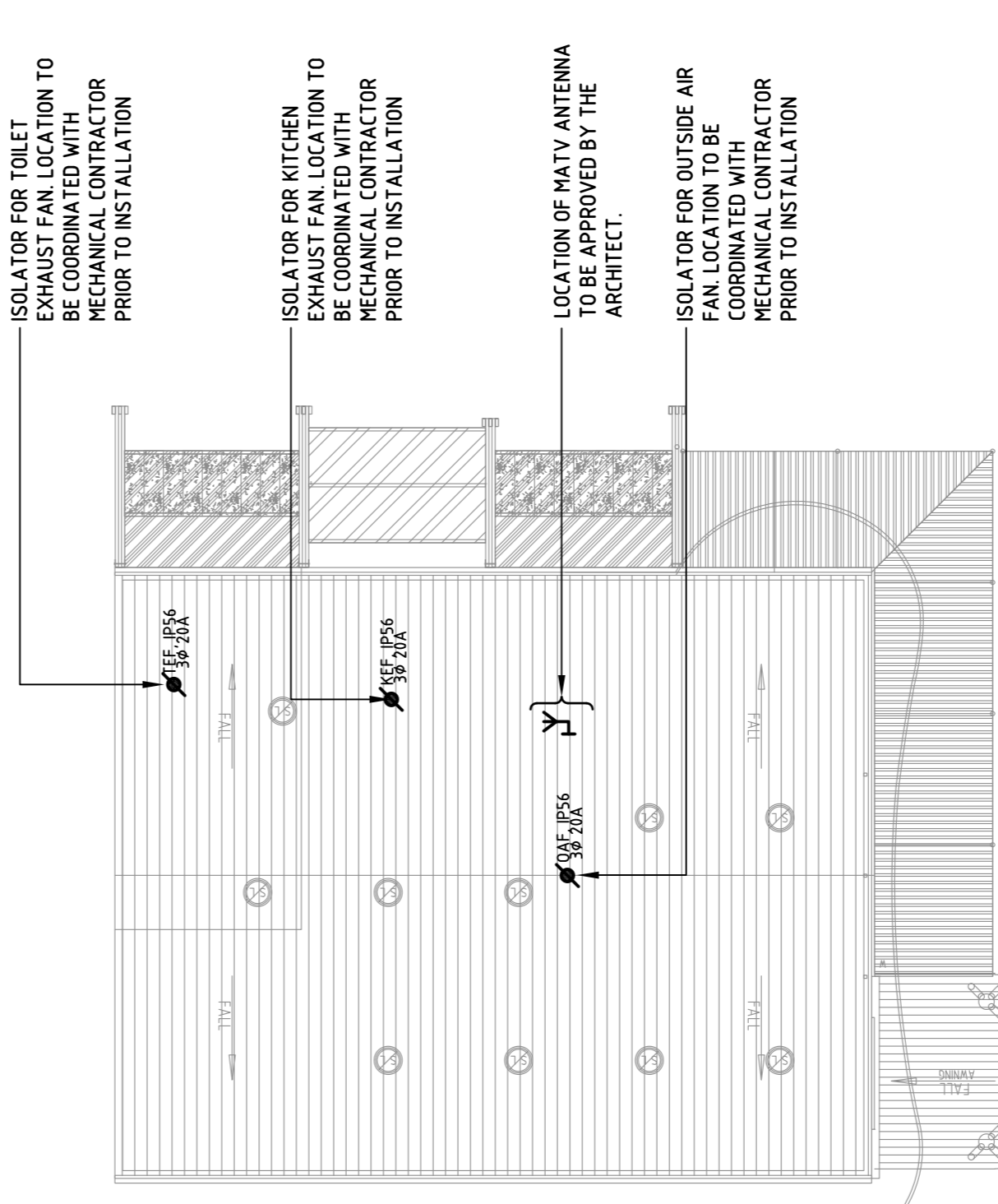
- Single GPO
- DOUBLE GPO
- 46P/FE1/IF SINGLE GPO FOR KITCHEN BOOSTER FAN, LAUNDRY OR TOILET EXHAUST FAN IN CEILING SPACE
- 15A GPO FOR MICROWAVE OVEN LOCATE AS PER ARCHITECTS JOINERY DRAWINGS
- ISOLATOR, SIZE AND RATING AS INDICATED
- COMMS RJ45 OUTLET
- MATV OUTLET.
- PAY TV OUTLET.
- WIFI ACCESS POINT
- DB-N DENOTES 40/100/1000BASE-T
- DB-X DENOTES 10/100/1000BASE-TX
- HARD WIRED CONNECTION TO HAND DRYER WITH ISOLATION SWITCH AT 2000 AFL
- MAIN DISTRIBUTION FRAME
- DISTRIBUTION BOARD.
- ELECTRICAL SUPPLY CONNECTION FACILITY
- MATV ANTENNA
- SATELLITE DISH
- COMMS CONDUIT / CABLE
- ELECTRICAL CONDUIT / CABLE
- EXISTING OVERHEAD ELECTRICAL CABLE

SECURITY

- INTERFACE TO DOOR OPENING/CLOSING MECHANISM. M - INDICATES MAGNETIC DOOR LOCK. PROVIDE POWER SUPPLY/INTERFACE AS REQUIRED.
- SECURITY KEY PAD
- PROXIMITY CARD READER
- SECURITY PANEL
- PUSH EXIT BUTTON
- DURESS ALARM
- DOOR RELEASE BUTTON
- MOTION SENSOR
- ALARM SOUNDER
- CCTV CAMERA - WP INDICATES WEATHER PROOF & D INDICATES DOME CAMERA

SCHEMATICS LEGEND

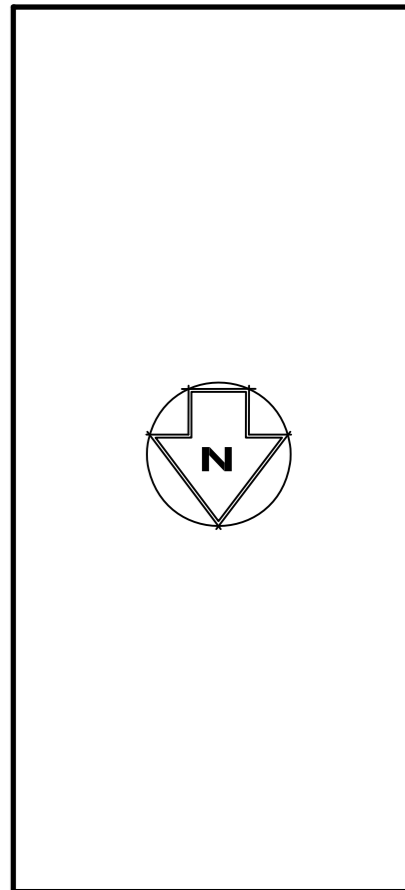
- Moulded Case Circuit Breaker (180A), Miniature Circuit Breaker (480A)
- ISOLATOR, LOCKABLE IN ON/OFF POSITION
- kW/hr METER PANEL
- CURRENT TRANSFORMER, SIZE AS INDICATED
- FUSE, SIZE AS INDICATED
- EMERGENCY LIGHTING TEST SWITCH TO AS2293 WITH 4 CONTACTORS



ROOF PLAN
SCALE 1:200

NOT FOR CONSTRUCTION

REV NO.	AMENDMENT	DATE	REV NO.	AMENDMENT	DATE
A	REVISED TENDER ISSUE	18.10.18			
φ	TENDER ISSUE	12.10.18			
P1	PRELIMINARY ISSUE	22.08.18			



ARCHITECT:

CARTMAN DESIGNS
SPECIALISED COMMERCIAL BUSINESS
COMMERCIAL DESIGNERS
PH 108 307 1255 FAX 108 307 1255
email: jim@cartman.com.au

NJMdesign
consulting engineers

NJM Design Pty Ltd
ASB 50 Market St
Level 12, 461 Bourke St, Melbourne VIC 3000
Tel: (03) 9600 4400
Fax: (03) 9600 4170
Email: mail@njmdesign.com.au
Internet: www.njmdesign.com.au

PROJECT:
SHIRE OF DUNDAS WOODLANDS CULTURAL
COMMUNITY AND VISITORS CENTRE PROJECT
80 PRINSEP STREET, NORSEMAN WA 6443
FOR:
CARTMAN WA PTY, LTD

WORK STAGE:
TENDER

DATE:
AUGUST 2018

DESIGNED/DRAWN:
OK/AD

SCALE:
N/S

TITLE:
ELECTRICAL SERVICES
SCHEDULE OF DRAWINGS AND LEGEND OF
SYMBOLS

PROJECT NO.:
5460

DRAWING NO.:
E01

NO. OF SHEETS:
1 of 4

REVISION:
A