

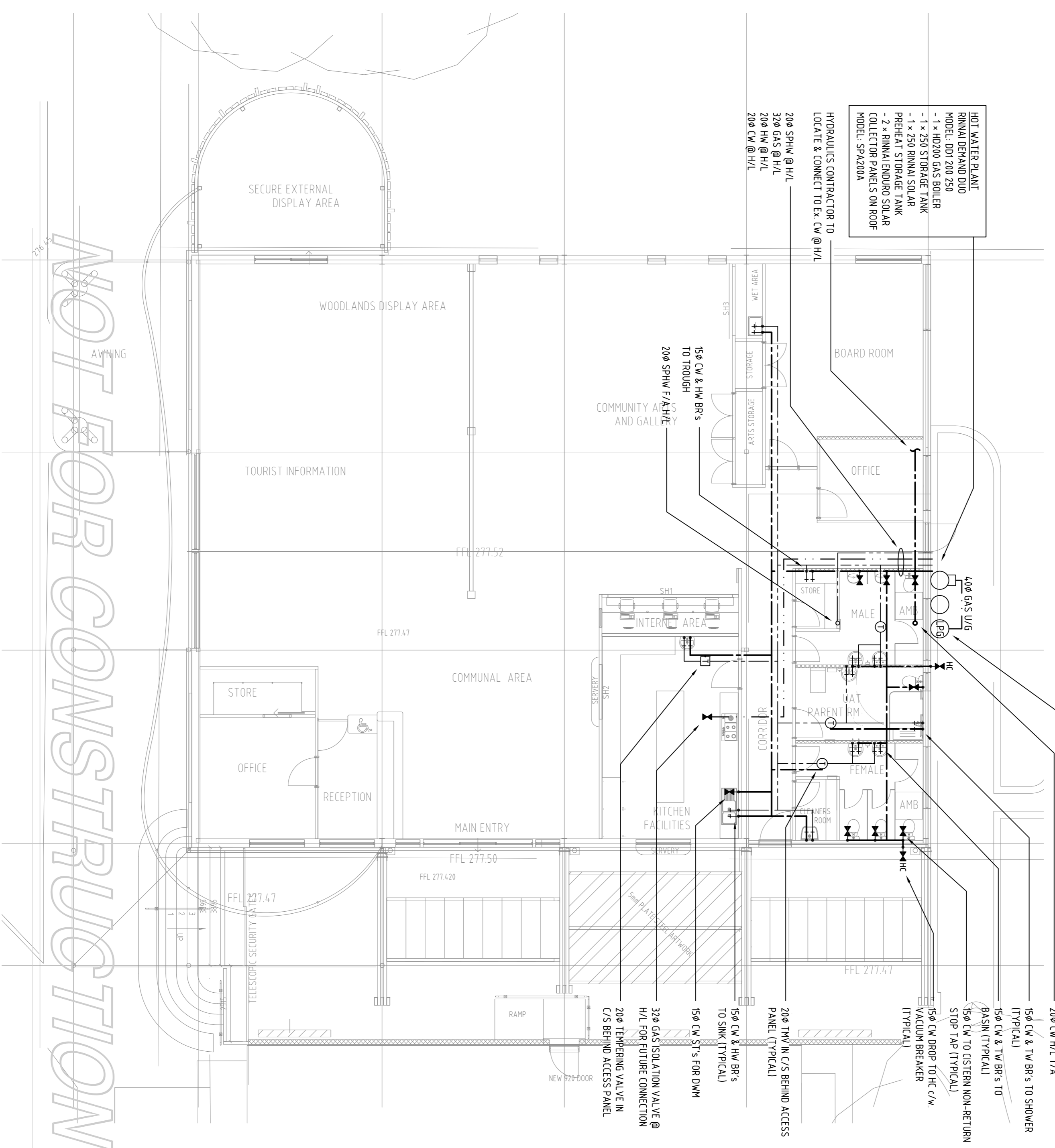
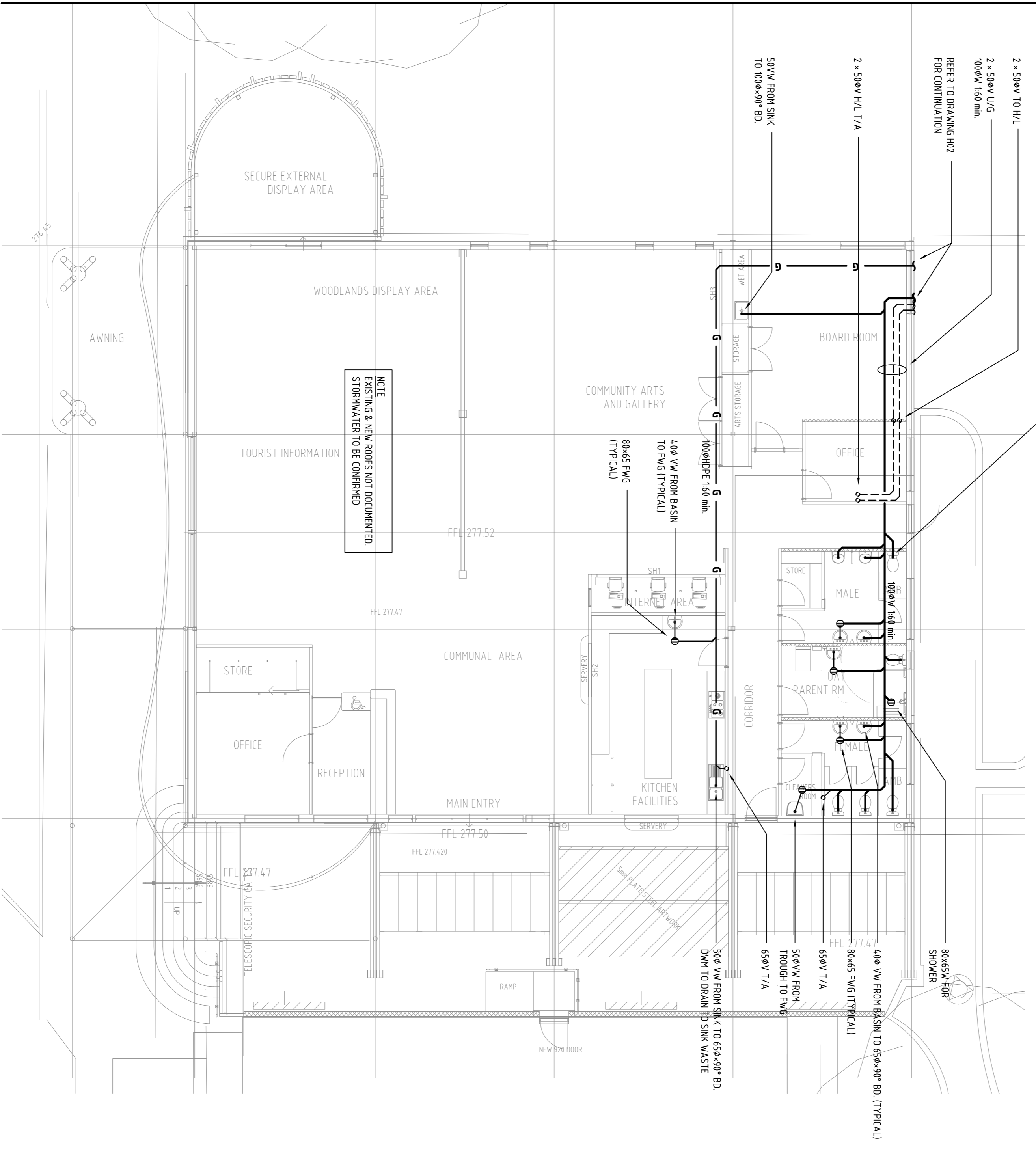
NOTE: REFER TO CIVIL ENGINEERS DRAWINGS FOR REGULATION OF ALL DOWNPIPES AND RIGGS TO LEGAL POINT OF DISCHARGE. ALL RIGGS ON GROUND FLOOR TO BE DOCUMENTED BY CIVIL ENGINEERS

NOTE: HYDRAULIC CONTRACTOR TO LOCATE AND CONFIRM THE DEPTH OF THE EXISTING SEWER PRIOR TO THE COMMENCEMENT OF ANY WORKS

NOTE: SEWER RETIGATION SHOWN INDICATIVE ONLY. EX. SEWER IN-GROUND NOT CONFIRMED

NOTE: ACTION TO SAW CUT SLAB AS REQUIRED

NOTE: SEWER NOT COORDINATED WITH STRUCTURE INVERT LEVELS NOT CONFIRMED



150mm-90° BD FOR WC (TYPICAL)

2 x 50WV TO H/L
2 x 50WV U/G
100WV 150 mm.
REFER TO DRAWING H02 FOR CONTINUATION

50WV FROM SINK TO 100WV-90° BD

100ØHDPE 160 mm
40Ø VW FROM BASIN TO FWG (TYPICAL)
80x45 FWG (TYPICAL)

NOTE: EXISTING & NEW ROOFS NOT DOCUMENTED. STORMWATER TO BE CONFIRMED.

HOT WATER PLANT
RINMA DEMAND DUO
MODEL: D01 200 250
- 1 x HD20 GAS BOILER
- 1 x 250 STORAGE TANK
- 1 x 250 RINMA SOLAR PREHEAT STORAGE TANK
70 L FLOOR RACKS ON ROOF
MODEL: SP2200A

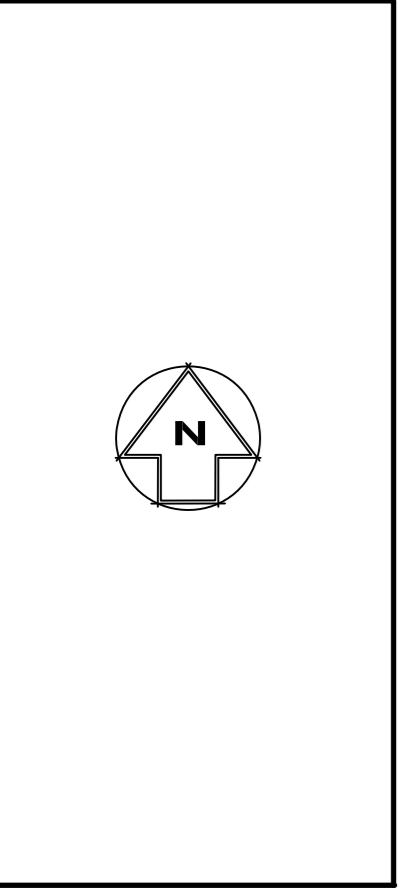
HYDRAULICS CONTRACTOR TO LOCATE & CONNECT TO EX. CW @ H/L
20Ø SPHW @ H/L
20Ø GAS @ H/L
20Ø HW @ H/L
20Ø CW @ H/L

15Ø CW & HW BR'S TO TROUGH
20Ø SPHW F/A @ H/L

15Ø CW & TW BR'S TO SHOWER (TYPICAL)
15Ø CW & TW BR'S TO BASIN (TYPICAL)
15Ø CW TO OSTERN NON-RETURN STOP TAP (TYPICAL)
15Ø CW PROP TO HC CW VACUUM BREAKER (TYPICAL)

20Ø 11WV IN C/S BEHIND ACCESS PANEL (TYPICAL)
15Ø CW & HW BR'S TO SINK (TYPICAL)
15Ø CW ST'Y FOR DWH
32Ø GAS ISOLATION VALVE @ H/L FOR FUTURE CONNECTION
20Ø TEMPERING VALVE IN C/S BEHIND ACCESS PANEL

| | | | | | |
|----------|----------------------|----------|----------|-----------|------|
| REV. NO. | AMENDMENT | DATE | REV. NO. | AMENDMENT | DATE |
| A | REVISED TENDER ISSUE | 18.10.18 | | | |
| Ø | TENDER ISSUE | 12.10.18 | | | |
| P1 | PRELIMINARY ISSUE | 22.08.18 | | | |



ARCHITECT:

CARTMAN DESIGNS

SUITE 222 PERFORMANCE BUSINESS CENTRE
1155/1155A/1155B/1155C/1155D/1155E/1155F/1155G/1155H/1155I/1155J/1155K/1155L/1155M/1155N/1155O/1155P/1155Q/1155R/1155S/1155T/1155U/1155V/1155W/1155X/1155Y/1155Z/1155AA/1155AB/1155AC/1155AD/1155AE/1155AF/1155AG/1155AH/1155AI/1155AJ/1155AK/1155AL/1155AM/1155AN/1155AO/1155AP/1155AQ/1155AR/1155AS/1155AT/1155AU/1155AV/1155AW/1155AX/1155AY/1155AZ/1155BA/1155BB/1155BC/1155BD/1155BE/1155BF/1155BG/1155BH/1155BI/1155BJ/1155BK/1155BL/1155BM/1155BN/1155BO/1155BP/1155BQ/1155BR/1155BS/1155BT/1155BU/1155BV/1155BW/1155BX/1155BY/1155BZ/1155CA/1155CB/1155CC/1155CD/1155CE/1155CF/1155CG/1155CH/1155CI/1155CJ/1155CK/1155CL/1155CM/1155CN/1155CO/1155CP/1155CQ/1155CR/1155CS/1155CT/1155CU/1155CV/1155CW/1155CX/1155CY/1155CZ/1155DA/1155DB/1155DC/1155DD/1155DE/1155DF/1155DG/1155DH/1155DI/1155DJ/1155DK/1155DL/1155DM/1155DN/1155DO/1155DP/1155DQ/1155DR/1155DS/1155DT/1155DU/1155DV/1155DW/1155DX/1155DY/1155DZ/1155EA/1155EB/1155EC/1155ED/1155EE/1155EF/1155EG/1155EH/1155EI/1155EJ/1155EK/1155EL/1155EM/1155EN/1155EO/1155EP/1155EQ/1155ER/1155ES/1155ET/1155EU/1155EV/1155EW/1155EX/1155EY/1155EZ/1155FA/1155FB/1155FC/1155FD/1155FE/1155FF/1155FG/1155FH/1155FI/1155FJ/1155FK/1155FL/1155FM/1155FN/1155FO/1155FP/1155FQ/1155FR/1155FS/1155FT/1155FU/1155FV/1155FW/1155FX/1155FY/1155FZ/1155GA/1155GB/1155GC/1155GD/1155GE/1155GF/1155GG/1155GH/1155GI/1155GJ/1155GK/1155GL/1155GM/1155GN/1155GO/1155GP/1155GQ/1155GR/1155GS/1155GT/1155GU/1155GV/1155GW/1155GX/1155GY/1155GZ/1155HA/1155HB/1155HC/1155HD/1155HE/1155HF/1155HG/1155HH/1155HI/1155HJ/1155HK/1155HL/1155HM/1155HN/1155HO/1155HP/1155HQ/1155HR/1155HS/1155HT/1155HU/1155HV/1155HW/1155HX/1155HY/1155HZ/1155IA/1155IB/1155IC/1155ID/1155IE/1155IF/1155IG/1155IH/1155II/1155IJ/1155IK/1155IL/1155IM/1155IN/1155IO/1155IP/1155IQ/1155IR/1155IS/1155IT/1155IU/1155IV/1155IW/1155IX/1155IY/1155IZ/1155JA/1155JB/1155JC/1155JD/1155JE/1155JF/1155JG/1155JH/1155JI/1155JJ/1155JK/1155JL/1155JM/1155JN/1155JO/1155JP/1155JQ/1155JR/1155JS/1155JT/1155JU/1155JV/1155JW/1155JX/1155JY/1155JZ/1155KA/1155KB/1155KC/1155KD/1155KE/1155KF/1155KG/1155KH/1155KI/1155KJ/1155KK/1155KL/1155KM/1155KN/1155KO/1155KP/1155KQ/1155KR/1155KS/1155KT/1155KU/1155KV/1155KW/1155KX/1155KY/1155KZ/1155LA/1155LB/1155LC/1155LD/1155LE/1155LF/1155LG/1155LH/1155LI/1155LJ/1155LK/1155LL/1155LM/1155LN/1155LO/1155LP/1155LQ/1155LR/1155LS/1155LT/1155LU/1155LV/1155LW/1155LX/1155LY/1155LZ/1155MA/1155MB/1155MC/1155MD/1155ME/1155MF/1155MG/1155MH/1155MI/1155MJ/1155MK/1155ML/1155MM/1155MN/1155MO/1155MP/1155MQ/1155MR/1155MS/1155MT/1155MU/1155MV/1155MW/1155MX/1155MY/1155MZ/1155NA/1155NB/1155NC/1155ND/1155NE/1155NF/1155NG/1155NH/1155NI/1155NJ/1155NK/1155NL/1155NM/1155NO/1155NP/1155NQ/1155NR/1155NS/1155NT/1155NU/1155NV/1155NW/1155NX/1155NY/1155NZ/1155OA/1155OB/1155OC/1155OD/1155OE/1155OF/1155OG/1155OH/1155OI/1155OJ/1155OK/1155OL/1155OM/1155ON/1155OO/1155OP/1155OQ/1155OR/1155OS/1155OT/1155OU/1155OV/1155OW/1155OX/1155OY/1155OZ/1155PA/1155PB/1155PC/1155PD/1155PE/1155PF/1155PG/1155PH/1155PI/1155PJ/1155PK/1155PL/1155PM/1155PN/1155PO/1155PP/1155PQ/1155PR/1155PS/1155PT/1155PU/1155PV/1155PW/1155PX/1155PY/1155PZ/1155QA/1155QB/1155QC/1155QD/1155QE/1155QF/1155QG/1155QH/1155QI/1155QJ/1155QK/1155QL/1155QM/1155QN/1155QO/1155QP/1155QQ/1155QR/1155QS/1155QT/1155QU/1155QV/1155QW/1155QX/1155QY/1155QZ/1155RA/1155RB/1155RC/1155RD/1155RE/1155RF/1155RG/1155RH/1155RI/1155RJ/1155RK/1155RL/1155RM/1155RN/1155RO/1155RP/1155RQ/1155RR/1155RS/1155RT/1155RU/1155RV/1155RW/1155RX/1155RY/1155RZ/1155SA/1155SB/1155SC/1155SD/1155SE/1155SF/1155SG/1155SH/1155SI/1155SJ/1155SK/1155SL/1155SM/1155SN/1155SO/1155SP/1155SQ/1155SR/1155SS/1155ST/1155SU/1155SV/1155SW/1155SX/1155SY/1155SZ/1155TA/1155TB/1155TC/1155TD/1155TE/1155TF/1155TG/1155TH/1155TI/1155TJ/1155TK/1155TL/1155TM/1155TN/1155TO/1155TP/1155TQ/1155TR/1155TS/1155TT/1155TU/1155TV/1155TW/1155TX/1155TY/1155TZ/1155UA/1155UB/1155UC/1155UD/1155UE/1155UF/1155UG/1155UH/1155UI/1155UJ/1155UK/1155UL/1155UM/1155UN/1155UO/1155UP/1155UQ/1155UR/1155US/1155UT/1155UU/1155UV/1155UW/1155UX/1155UY/1155UZ/1155VA/1155VB/1155VC/1155VD/1155VE/1155VF/1155VG/1155VH/1155VI/1155VJ/1155VK/1155VL/1155VM/1155VN/1155VO/1155VP/1155VQ/1155VR/1155VS/1155VT/1155VU/1155VV/1155VW/1155VX/1155VY/1155VZ/1155WA/1155WB/1155WC/1155WD/1155WE/1155WF/1155WG/1155WH/1155WI/1155WJ/1155WK/1155WL/1155WM/1155WN/1155WO/1155WP/1155WQ/1155WR/1155WS/1155WT/1155WU/1155WV/1155WW/1155WX/1155WY/1155WZ/1155XA/1155XB/1155XC/1155XD/1155XE/1155XF/1155XG/1155XH/1155XI/1155XJ/1155XK/1155XL/1155XM/1155XN/1155XO/1155XP/1155XQ/1155XR/1155XS/1155XT/1155XU/1155XV/1155XW/1155XX/1155XY/1155XZ/1155YA/1155YB/1155YC/1155YD/1155YE/1155YF/1155YG/1155YH/1155YI/1155YJ/1155YK/1155YL/1155YM/1155YN/1155YO/1155YP/1155YQ/1155YR/1155YS/1155YT/1155YU/1155YV/1155YW/1155YX/1155YY/1155YZ/1155ZA/1155ZB/1155ZC/1155ZD/1155ZE/1155ZF/1155ZG/1155ZH/1155ZI/1155ZJ/1155ZK/1155ZL/1155ZM/1155ZN/1155ZO/1155ZP/1155ZQ/1155ZR/1155ZS/1155ZT/1155ZU/1155ZV/1155ZW/1155ZX/1155ZY/1155ZZ

ARCHITECT:

NUMdesign
consulting engineers

NUMdesign Pty Ltd
Level 12, 461 Bourke St, Melbourne, VIC 3000
Tel: (03) 9600 4400
Fax: (03) 9600 4170
Email: mel@numdesign.com.au
Internet: www.numdesign.com.au

PROJECT:

SHIRE OF DUNDAS WOODLANDS CULTURAL COMMUNITY AND VISITORS CENTRE PROJECT
80 PRINSEP STREET, NORSEMAN WA 6443

FOR:

CARTMAN WA PTY, LTD

WORK STAGE:

TENDER

DATE: AUGUST 2018

DESIGNED/DRAWN: JLRBT

SCALE: 1:100 @ A1

TITLE:

HYDRAULICS SERVICES
GROUND FLOOR - SEWER, STORMWATER, WATER & GAS LAYOUT

PROJECT NO: 5460

DRAWING NO: H03

NO. OF SHEETS: 3 of 4

REVISION: A